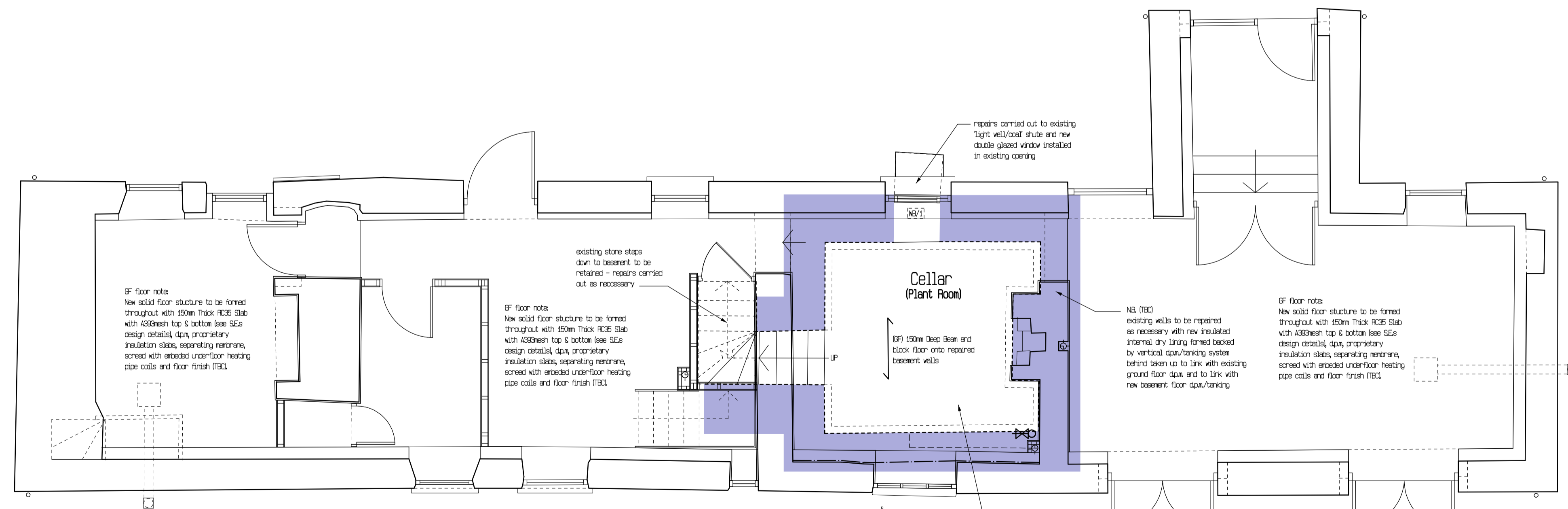


Ground Floor Plan



Ground floor foundations & Basement Plan

- NOTES
1. THIS DRAWING TO BE READ WITH ALL RELEVANT ARCHITECTS DRAWINGS & CONSULTANT ENGINEERS DETAILS.
 2. ALL DIMENSIONS TO BE SET OUT / TAKEN FROM / CHECKED ON SITE BY CONTRACTOR.
 3. THIS DRAWING TO BE READ WITH B'REGS NOTES / BRIEF SPEC NOTES SEE SEPARATE DRAWINGS.

PRELIMINARY

Rev.	Date	Description
P3	18.05.18	1. Rev. locations shown. 2. SE intersection added. 3. Sup. providing horsebox ventilation for radon protection.
P2	22.11.17	1. Window & door mells added. 2. Lintels over XG6 & 4 connected to timber. 3. measure floor note changed & joists shown. 4. Existing floor over Living area noted as removed to create double height space. 5. Joints of new openings formed shown hatched.

coleman hicks
PARTNERSHIP
Architects

Marlborough House High Street
Kidlington OXON OX5 2DN
t 01865 842922 f 01865 841004
design@col-hicks.co.uk

PROJECT
Lower Ridings Farm
North Leigh
Oxon

DRAWING TITLE
UNIT 1 (Barn & Byre) GROUND & BASEMENT PLANS

Scale Date Drawn
1:50@A1 1:100@A3 Oct 2017 PAJF

Job No. Drawing No.
1730 111

P3 DO NOT SCALE COPYRIGHT RESERVED

Unit 1 - Proposed Ground & Ground Floor Foundations/Basement Floor Plans

